

» VII. CONCRETE FOOTINGS AND REINFORCEMENT BASKETS



VII. CONCRETE FOOTINGS AND REINFORCEMENT BASKETS

General information



APPLICATION:

Buried concrete footings are used as foundations for lighting columns. Buried concrete filled reinforcement baskets are used as foundations for lighting columns and poles.

CONCRETE FOOTINGS

TECHNICAL INFORMATION:

- concrete class B20,
- steel reinforcement basket,
- screws spigot endings hot galvanized,
- in concrete footings for columns and flag poles we use thermo-shrinkable sleeves put on the screws endings in place of base plate deposition, what protects against corrosion on screw,
- side holes and vertical hole to provide power cables,
- surface is covered with an impregnate coating(certified asphalted anion emulsion),
- square section (columns and flag poles as well pole SP-5W and SP-31W) or round (poles with external plastic coating and column SAL DECO-3).

ADVANTAGES:

- single-element construction makes it easy to place products in the ground,
- fast and easy assembly with no seasoning required,
- high quality due to used automated controlled process and equipped with a biaxial vibrator (which produces high density concrete mixture).

REINFORCEMENT BASKETS

TECHNICAL INFORMATION:

- steel reinforcement basket,
- protected corrosion resistant oxide paint,
- screws spigot endings hot galvanized,
- in reinforcements baskets for columns and flag poles used thermo-shrinkable sleeves placed on the screws spigot endings in place of base plate deposition, what protects before corrosion bell on screw,
- square section (columns and flag poles as well pole SP-5W and SP-31W) or round (poles with external plastic coating and column SAL DECO-3).

ADVANTAGES:

- light weight facilitates easy transport,
- for installation on customer footings.

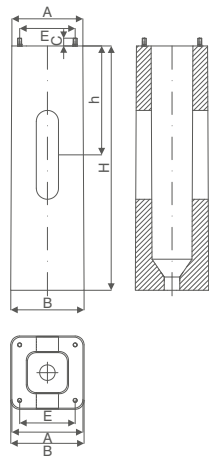
Additional elements:

stainless washer, hot galvanized nut or stainless washer, hot galvanized ripable nut are set of connection elements for columns type SAL, MAL hot galvanized washer, hot galvanized nut, rubber cover plate for poles type S, SP, SM.

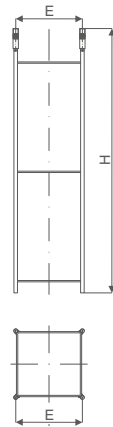
The manufacturer recommends using original footings and reinforcement baskets as well connection elements to a guarantee of stability and safety of whole construction.

VII. CONCRETE FOOTINGS AND REINFORCEMENT BASKETS

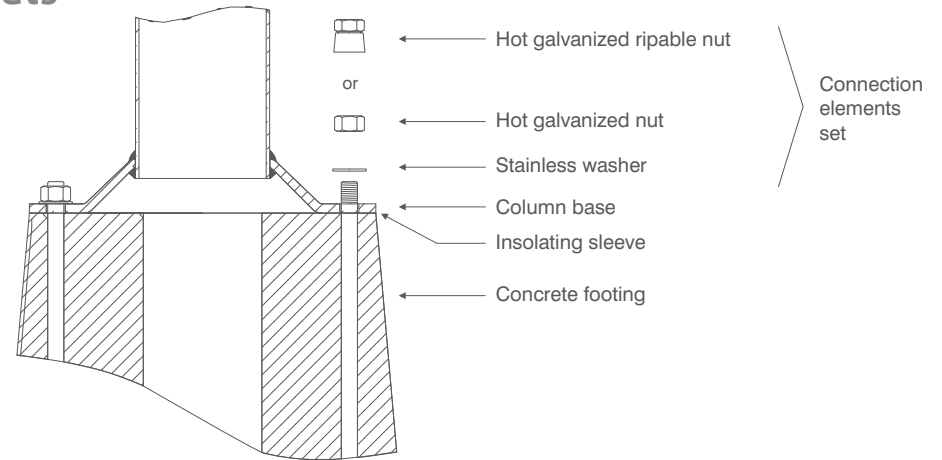
» Concrete Footings and Reinforcement Baskets



Concrete footing



Reinforcement basket



Way of assembling column to concrete footing

SQUARE CONCRETE FOOTING

Footing type	B-50A	B-50	B-51A	B-51	B-60A	B-60	B-60T	B-70A	B-70	B-70B	B-71	B-71T	B-80
Code	311150A	311150	311151A	311151	311160A	311160	311160T	311170A	311170	311170B	311171	311171T	311180
Dimensions A x B x H [mm]	240x255x1000	240x255x900	260x270x1200	260x270x1000	320x330x1100	320x330x1000	320x330x1000	400x410x1350	400x410x1200	400x410x1100	400x410x1000	400x410x1000	400x410x1500
Depth of cable hole h [mm]	600	500	600	400	500	400	400	750	600	500	400	400	700

SQUARE REINFORCEMENT BASKET

Reinforcement basket type	Z-50A	Z-50	Z-51A	Z-51	Z-60A	Z-60	Z-60T	Z-70A	Z-70	Z-70B	Z-71	Z-71T	Z-80	
Code	311205A	311205	311251A	311251	311206A	311206	311206T	311207A	311207	311207B	311271	311271T	311208	
Height H [mm]	980	870	1180	975	1085	985	1060	1340	1190	1090	965	1055	1500	
Screw spacing E [mm]	180		200		250			300						
Screws quantity x size x length C [mm]	4 x M14 x 30		4 x M18 x 35				4 x M18 x 90		4 x M24 x 45			4 x M18 X 110		4 x M24 x 50
Hot galvanized nut set code	4006		4008				4012			4008		4014		
Hot galvanized ripable nut set code	4007		4009				4013			4009		-		
Poles for mounting	SALø114/B60, SALø114/C75, SALø120	SALø114/B60, SALø114/C75, SALø120	SALø114/D60, SALø114/D75, SALø120E, SALø146G, SAL DECO-1, SAL DECO-2	SALø114/D60, SALø114/D75, SALø120E	SALø146	SALø146	SP-31W	SALø176, SALø178K, SALø180M	SALø176, SALø178K, SALø180M	SALø176, SALø178K, SALø180M	SALø146H, SALø176, SALø178K, SALø180M	SP-5W	MALø225	