

I. ALUMINIUM COLUMNS

Decorative columns DP



Aluminium column		SAL DP-31	SAL DP-42	SAL DP-44	SAL DP-45	SAL DP-46
Height [m]		3,0	4,0	4,0	4,0	4,0
Spigot ending type		Ø60				
Colour -anodizing method	CO - natural colour	42910/CO	42911/CO	42913/CO	42914/CO	42943/CO
	C - electrochemical colouring	42910/C...	42911/C...	42913/C...	42914/C...	42943/C..
	CI - interference colouring	42910/CI...	42911/CI...	42913/CI...	42914/CI...	42943/CI..
Code						
Painting - polyester powder paints according to RAL pallet		43910	43911	43913	43914	43943
Net weight [kg]		15,8	20,9	20,5	21,5	23,1
Approximate unit volume [m³]*		0,06	0,07	0,07	0,07	0,07
Pole top mounted		OPC-1 (p. 144), OP (p. 142), OPA-1 (p. 146), ELBA (p. 156)			OPA-1 (p. 146)	OPC-1 (p. 144), OP (p. 142), OPA-1 (p. 146), ELBA (p. 156)
Concrete footing type		B-50				
Concrete footing code		311150				
Reinforcement basket type		Z-50				
Reinforcement basket code		311205				
Hot galvanized nut set		4006				
Hot galvanized ripable nut set		4007				
Base dimensions (side length/fixing hole spacing/thickness) [mm]		224/180/8				

* For orders more than 10 pcs stated volume may change according to packing

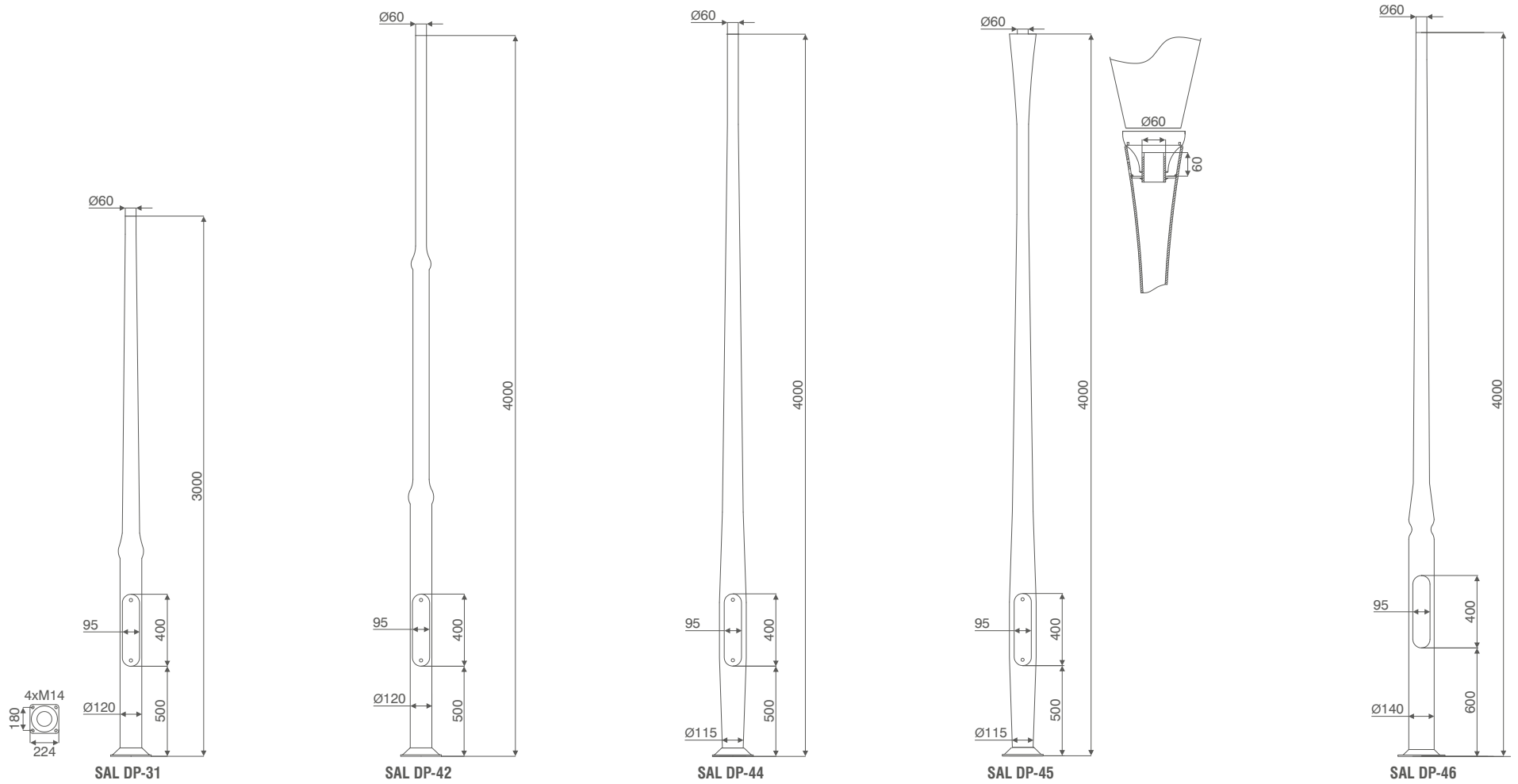
Acceptable column load

Acceptable single luminaire mass [kg]		20				
Acceptable single luminaire windage [m²] for Cx=1	I zone, II location category 22 m/s, (79,2 km/h)	0,90	0,51	0,61	0,59	0,48
	I and III zone, II location category For 450 m n.p.m. 24 m/s, (86,4 km/h)	0,78	0,43	0,52	0,50	0,41
	II zone, II location category 26 m/s, (93,6 km/h)	0,61	0,32	0,40	0,38	0,30
	III zone, II location category For 750 m n.p.m. 27,9 m/s, (100,6 km/h)	0,57	0,29	0,34	0,31	0,27

Specified arms and luminaires must always be checked against published column wind zone loadings and location categories

I. ALUMINIUM COLUMNS

» Decorative columns DP



I. ALUMINIUM COLUMNS

Decorative columns DP



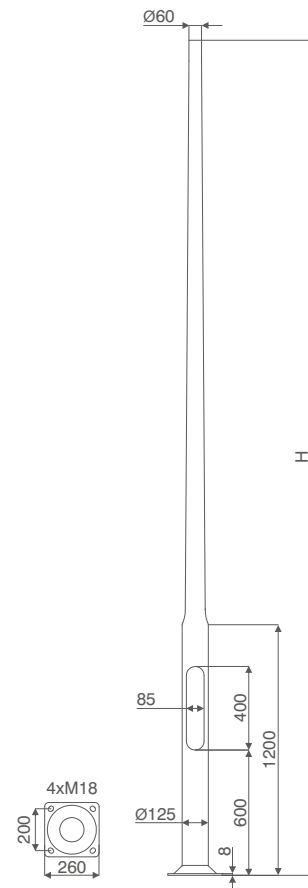
Aluminium column		SAL DP-38	SAL DP-48	SAL DP-58	SAL DP-68
Height [m]		3,0	4,0	5,0	6,0
Spigot ending type		Ø60			
Colour -anodizing method	C0 - natural colourcode	42945/C0	42946/C0	42947/C0	42948/C0
	C - electrochemical colouring	42945/C..	42946/C..	42947/C..	42948/C..
	CI - interference colouring	42945/Cl..	42946/Cl..	42947/Cl..	42948/Cl..
Code					
Painting - polyester powder paints according to RAL pallet		43945	43946	43947	43948
Net weight [kg]		10,9	13,4	16,0	18,7
Approximate unit volume [m ³]*		0,07	0,09	0,11	0,14
Pole top mounted		OPC-1 (p. 144), OP (p. 142), OPA-1 (p. 146), ELBA (p. 156)			
Concrete footing type		B-51			
Concrete footing code		311151			
Reinforcement basket type		Z-51			
Reinforcement basket code		311251			
Hot galvanized nut set		4008			
Hot galvanized ripable nut set		4009			
Base dimensions (side lenght/fixing hole spacing/thickness) [mm]		260/200/8			

* For orders more than 10 pcs stated volume may change according to packing

Acceptable columns load

Acceptable single luminaire mass [kg]		20			
Acceptable single luminaire windage [m ²] for Cx = 1	I zone, III location category 22 m/s, (79,2 km/h)	0,96	0,56	0,31	0,14
	I and III zone, III location category For 450 m n.p.m. 24 m/s, (86,4 km/h)	0,84	0,47	0,25	0,10
	II zone, III location category 26 m/s, (93,6 km/h)	0,66	0,37	0,16	X
	III zone, III location category For 750 m n.p.m. 27,9 m/s, (100,6 km/h)	0,60	0,32	0,14	X

Specified arms and luminaires must always be checked against published column wind zone loadings and location categories



SAL DP38-DP68

I. ALUMINIUM COLUMNS

» Rooted decorative columns DP

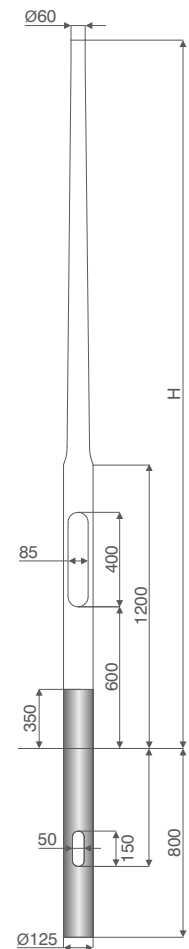
Aluminium column		SAL DP-38 dz	SAL DP-48 dz	SAL DP-58 dz	SAL DP-68 dz	
Height of column above the ground level H [m]		3,0	4,0	5,0	6,0	
Total H + h [m]		3,8	4,8	5,8	6,8	
Colour -anodizing method	C0 - natural colour	Code	42965/C0	42966/C0	42967/C0	42968/C0
	C - electrochemical colouring		42965/C..	42966/C..	42967/C..	42968/C..
	CI - interference colouring		42965/CI..	42966/CI..	42967/CI..	42968/CI..
Painting - polyester powder paints according to RAL pallet		43965	43966	43967	43968	
Net weight [kg]		12,7	15,2	17,8	20,5	
Approximate unit volume [m ³]*		0,03	0,04	0,05	0,05	
Pole top mounted		OPC-1 (p. 144), OP (p. 142), OPA-1 (p. 146), ELBA (p. 156)				

* For orders more than 10 pcs stated volume may change according to packing

Acceptable columns load

Acceptable luminaires and extension arms mass [kg]		20			
Acceptable windage of luminaires and extension arms [m ²] for C _x = 1	I zone, II location category 22 m/s, (79,2 km/h)	1,02	0,58	0,32	0,15
	I and III zone, II location category For 450 m n.p.m. 24 m/s, (86,4 km/h)	0,90	0,48	0,26	0,11
	II zone, II location category 26 m/s, (93,6 km/h)	0,70	0,36	0,18	X
	III zone, II location category For 750 m n.p.m. 27,9 m/s, (100,6 km/h)	0,65	0,34	0,16	X

Specified arms and luminaires must always be checked against published column wind zone loadings and location categories



SAL DP38dz-DP68dz

I. ALUMINIUM COLUMNS

Decorative columns DL

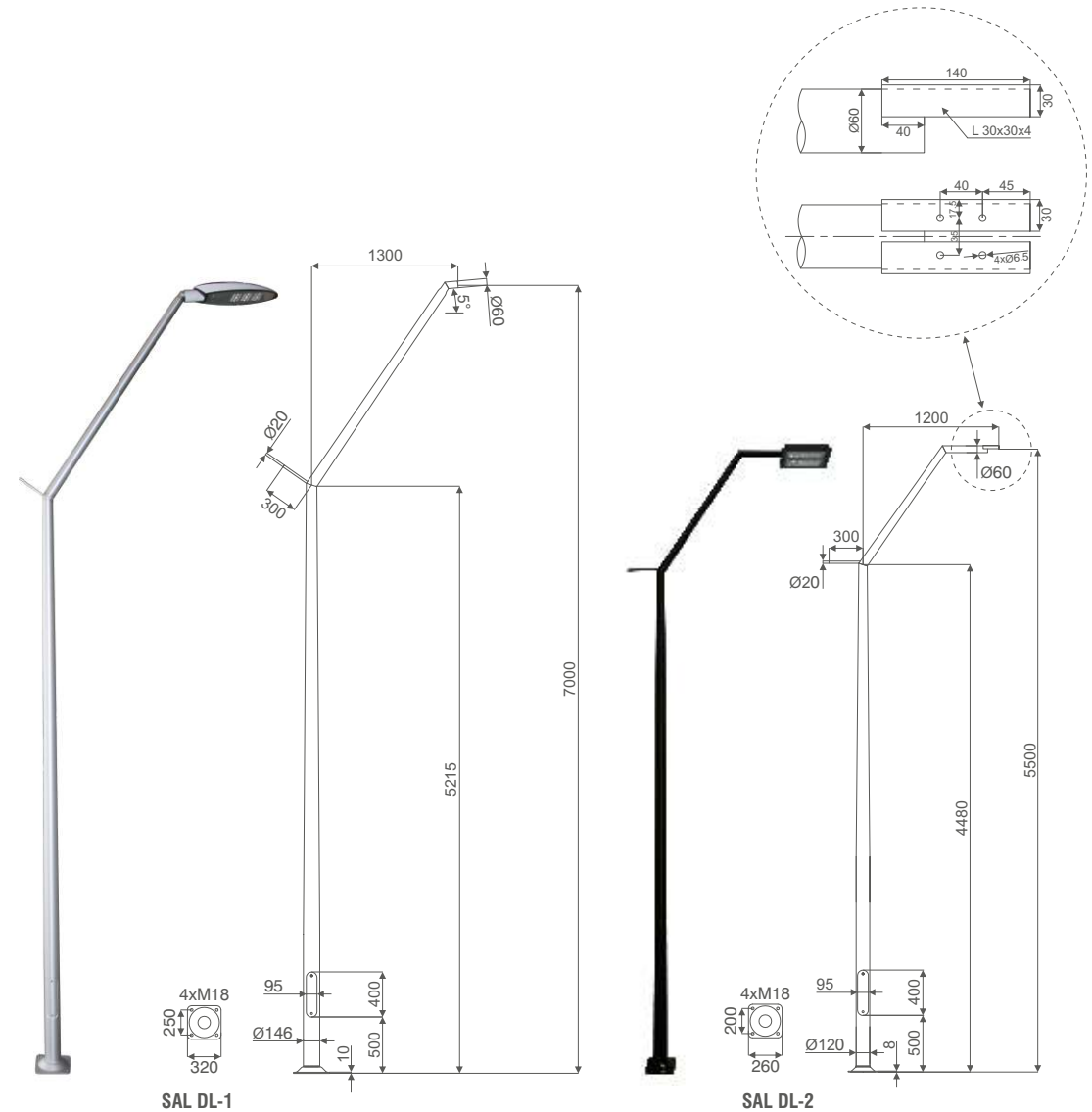
Aluminium column		SAL DL-1	SAL DL-2
Height [m]		7,0	5,5
Colour -anodizing method	C0 - natural colour	Code	42993/C0
	C - electrochemical colouring		42994/C0
	CI - interference colouring		42993/C..
Painting - polyester powder paints according to RAL pallet		42994/C..	42994/CI..
Net weight [kg]		43993	43994
Approximate unit volume [m ³]*		34,0	23,4
Pole top mounted		0,81	0,45
Concrete footing type		street lighting luminaires	ILO LED luminaire
Concrete footing code		B-60	B-51
Reinforcement basket type		311160	311151
Reinforcement basket code		Z-60	Z-51
Hot galvanized nut set		311206	311251
Hot galvanized ripable nut set			4008
Base dimensions (side length/fixing hole spacing/thickness) [mm]		4009	
		320/250/10	260/200/8

* For orders more than 10 pcs stated volume may change according to packing

Acceptable column load

Acceptable single luminaire mass [kg]		15	ILO LED
Acceptable single luminaire windage [m ²] for Cx=1	I zone, II location category 22 m/s, (79,2 km/h)	0,27	ILO LED
	I and III zone, II location category For 450 m n.p.m. 24 m/s, (86,4 km/h)	0,22	ILO LED
	II zone, II location category 26 m/s, (93,6 km/h)	0,14	ILO LED
	III zone, II location category For 750 m n.p.m. 27,9 m/s, (100,6 km/h)	0,12	ILO LED

Specified arms and luminaires must always be checked against published column wind zone loadings and location categories



I. ALUMINIUM COLUMNS

» Decorative columns DS

Aluminium column			SAL DS-51	SAL DS-81	SAL DS-82	SAL DS-83	SAL DS-84	SAL DS-85	SAL DS-86
Height [m]			6,0	7,9	7,8	7,7	8,4	8,2	7,7
Colour -anodizing method	CO - natural colour	Code	42224/CO	42937/CO	42938/CO	42939/CO	42940/CO	42941/CO	42942/CO
	C - electrochemical colouring		42224/C..	42937/C...	42938/C...	42939/C...	42940/C...	42941/C...	42942/C...
	CI - interference colouring		42224/CI..	42937/CI...	42938/CI...	42939/CI...	42940/CI...	42941/CI..	42942/CI...
Painting - polyester powder paints according to RAL pallet			43224	43937	43938	43939	43940	43941	43942
Net weight [kg]			25,5	35,8	74,0	37,1	48,7	53,2	36,2
Approximate unit volume [m ³]*			0,48	0,35	0,95	0,43	0,48	0,59	0,28
Pole top mounted			OPA, OW, OW-2		Street lighting luminaires (p. 166)				
Concrete footing type			B-51	B-60	B-70	B-60	B-70	B-60	B-60
Concrete footing code			311151	311160	311170	311160	311170	311160	311160
Reinforcement basket type			Z-51	Z-60	Z-70	Z-60	Z-70	Z-60	Z-60
Reinforcement basket code			311251	311206	311207	311206	311207	311206	311206
Hot galvanized nut set			4008	4008	4012	4008	4012	4008	4008
Hot galvanized ripable nut set			4009	4009	4013	4009	4013	4009	4009
Base dimensions (side length/fixing hole spacing/thickness) [mm]			260/200/8	320/250/10	400/300/12	320/250/10	400/300/12	320/250/10	320/250/10

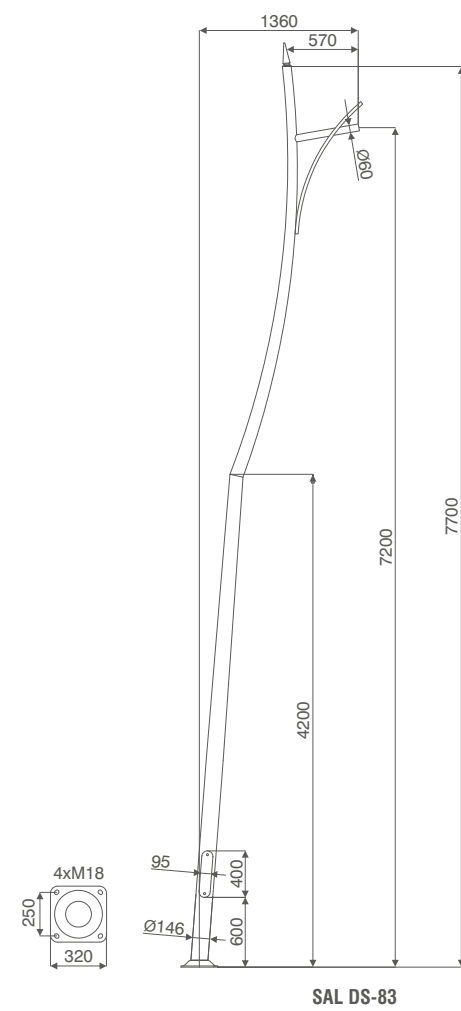
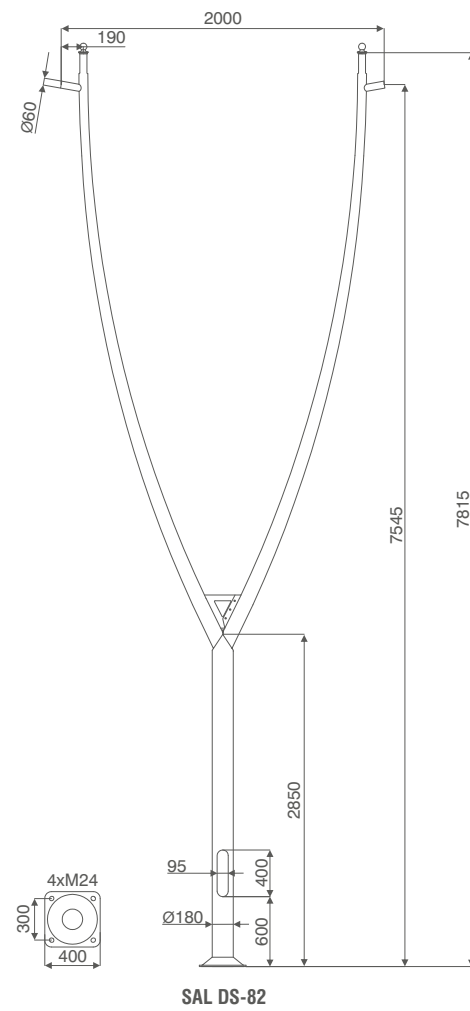
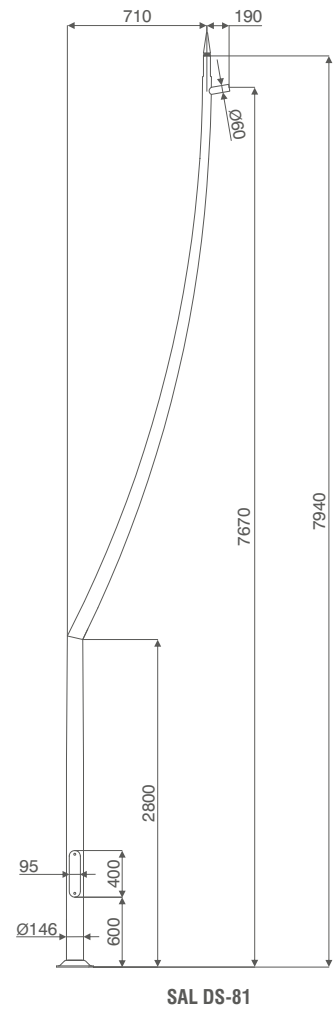
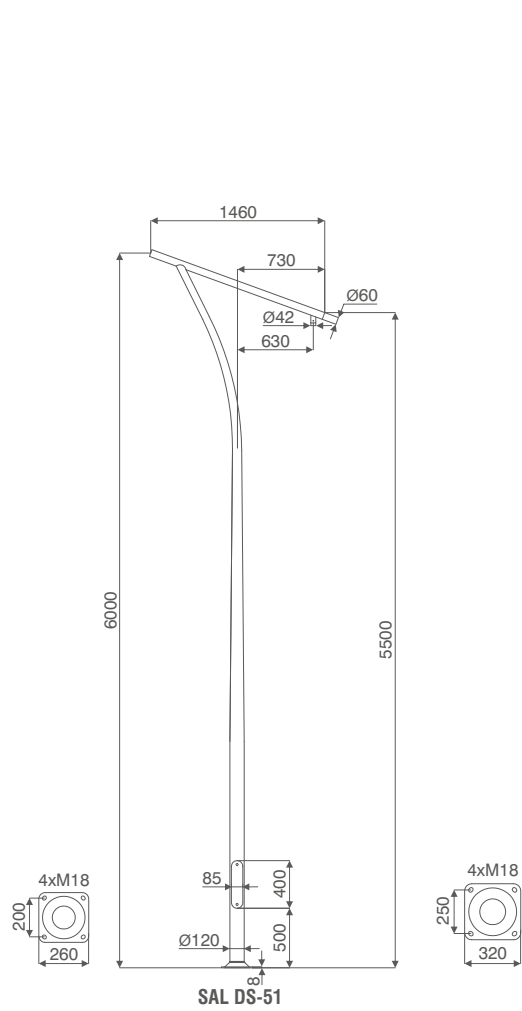
* For orders more than 10 pcs stated volume may change according to packing

Acceptable column load

Acceptable single luminaire mass [kg]		10 (Cx=0,7)			20			
Acceptable single luminaire windage [m ²] dla Cx=1	I zone, II location category 22 m/s, (79,2 km/h)	0,48	0,18	0,39	0,1	0,32	0,34	0,21
	I and III zone, II location category For 450 m n.p.m. 24 m/s, (86,4 km/h)	0,35	0,12	0,28	x	0,25	0,26	0,16
	II zone, II location category 26 m/s, (93,6 km/h)	0,21	x	0,17	x	0,16	0,16	0,12 (Cx=0,7)
	III zone, II location category For 750 m n.p.m. 27,9 m/s, (100,6 km/h)	x	x	0,14	x	0,14	0,13	Magnolia

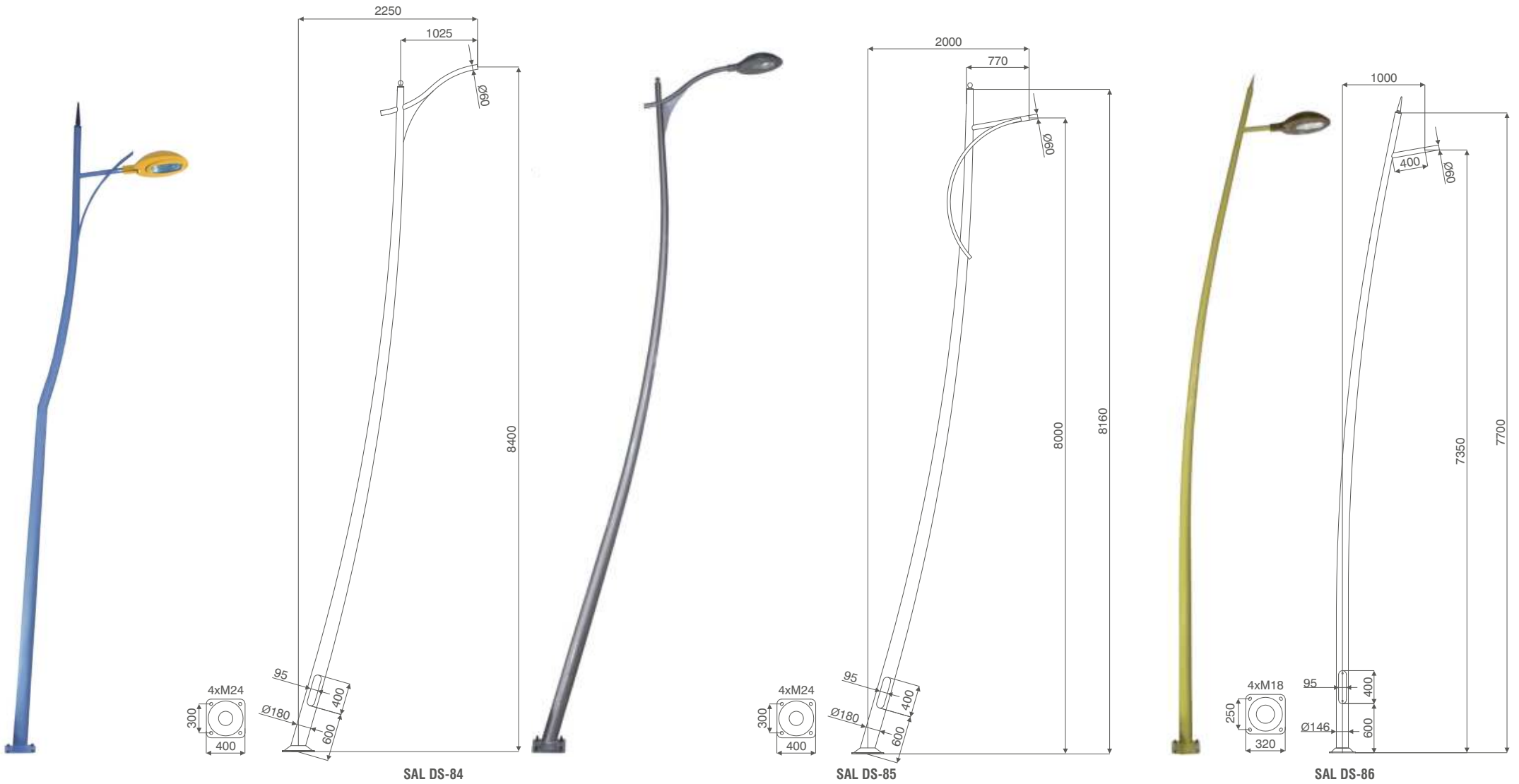
Specified arms and luminaires must always be checked against published column wind zone loadings and location categories

I. ALUMINIUM COLUMNS
Decorative columns DS



I. ALUMINIUM COLUMNS

» Decorative columns DS



I. ALUMINIUM COLUMNS

Decorative columns DS and DB



Aluminium column		SAL DS-87	SAL DS-88	SAL DS-88-R	SAL DB	SAL DB-1
Height [m]		6,6	9,4	9,4	9,4	9,4 i 6,6
Colour - anodizing method	CO - natural colour	42976/CO	42988/CO	42991/CO	42992/CO	42990/CO
	C - electrochemical colouring	42976/C..	42988/C..	42991/C..	42992/C..	42990/C..
	CI - interference colouring	42976/CI..	42988/CI..	42991/CI..	42992/CI..	42990/CI..
Painting - polyester powder paints according to RAL pallet		43976	43988	43991	43992	43990
Net weight [kg]		47,0	71,0	92,4	159,0	134,0
Approximate unit volume [m³]*		0,59	1,40	1,47	2,87	2,06
Pole top mounted		Street lighting luminaires (p. 166)				
Concrete footing type		B-60	B-70	B-70	B-70 x 2	B-70 and B60
Concrete footing code		311160	311170	311170	311170	311170 and 311160
Reinforcement basket type		Z-60	Z-70	Z-70	Z-70 x 2	Z-70 and Z-60
Reinforcement basket code		311206	311207	311207	311207	311207 and 311206
Hot galvanized nut set		4008	4012	4012	4012	4012 and 4008
Hot galvanized ripable nut set		4009	4013	4013	4013	4013 and 4009
Base dimensions (side length/fixing hole spacing/thickness) [mm]		320/250/10	400/300/12	400/300/12	400/300/12	400/300/12 and 320/250/10

* For orders more than 10 pcs stated volume may change according to packing

Acceptable column load

Acceptable single luminaire mass [kg]		15				
Acceptable single luminaire windage [m ²] for Cx = 0,7	I zone, III location category 22 m/s, (79,2 km/h)	0,38	0,18	0,18	0,18	0,16
	I and III zone, III location category For 450 m n.p.m. 24 m/s, (86,4 km/h)	0,28	0,10	0,10	0,10	Magnolia
	II strefa, III location category 26 m/s, (93,6 km/h)	0,16	x	x	x	x
	III zone, III location category For 750 m n.p.m. 27,9 m/s, (100,6 km/h)	0,12	x	x	x	x

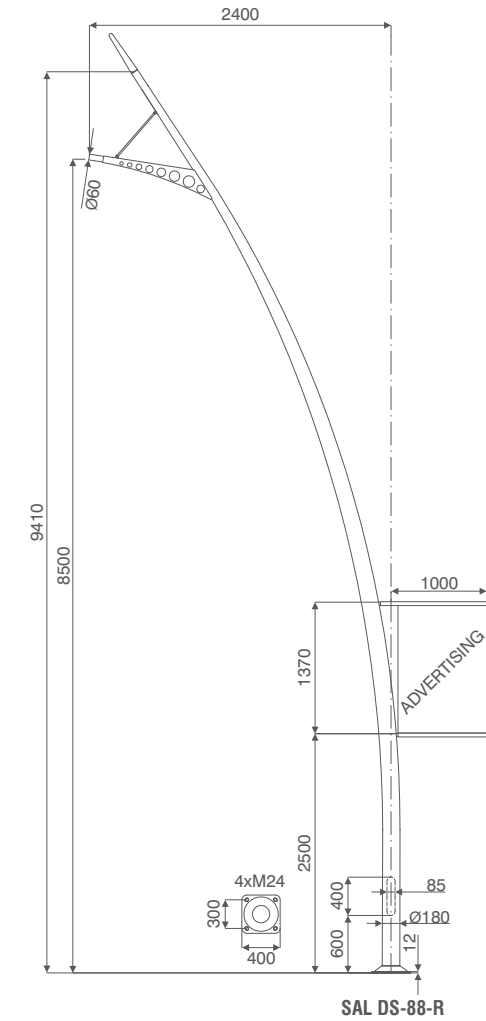
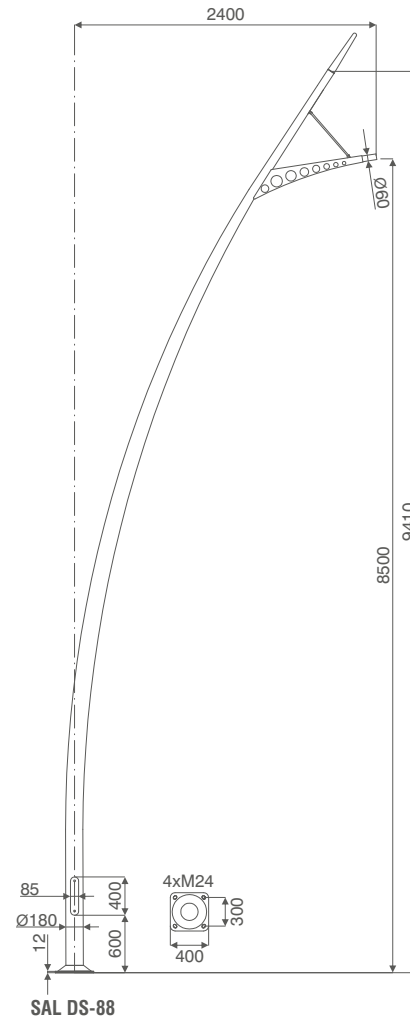
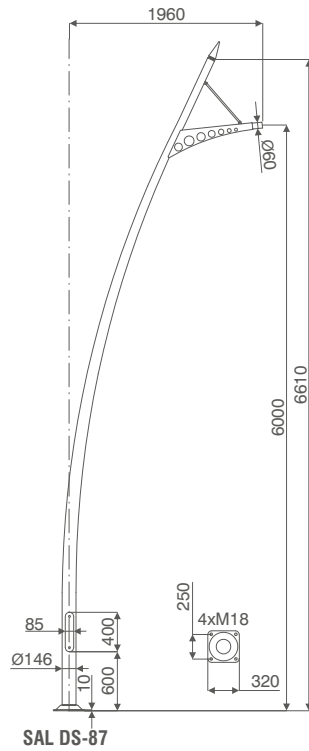
Specified arms and luminaires must always be checked against published column wind zone loadings and location categories

I. ALUMINIUM COLUMNS

» Decorative columns DS and DB



Polish Recommend Product



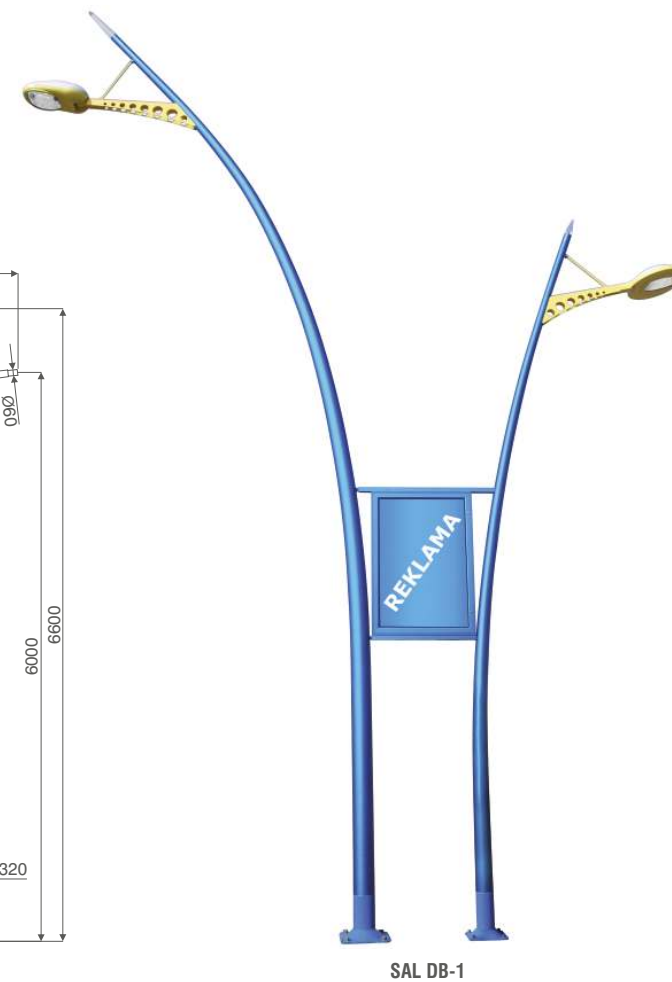
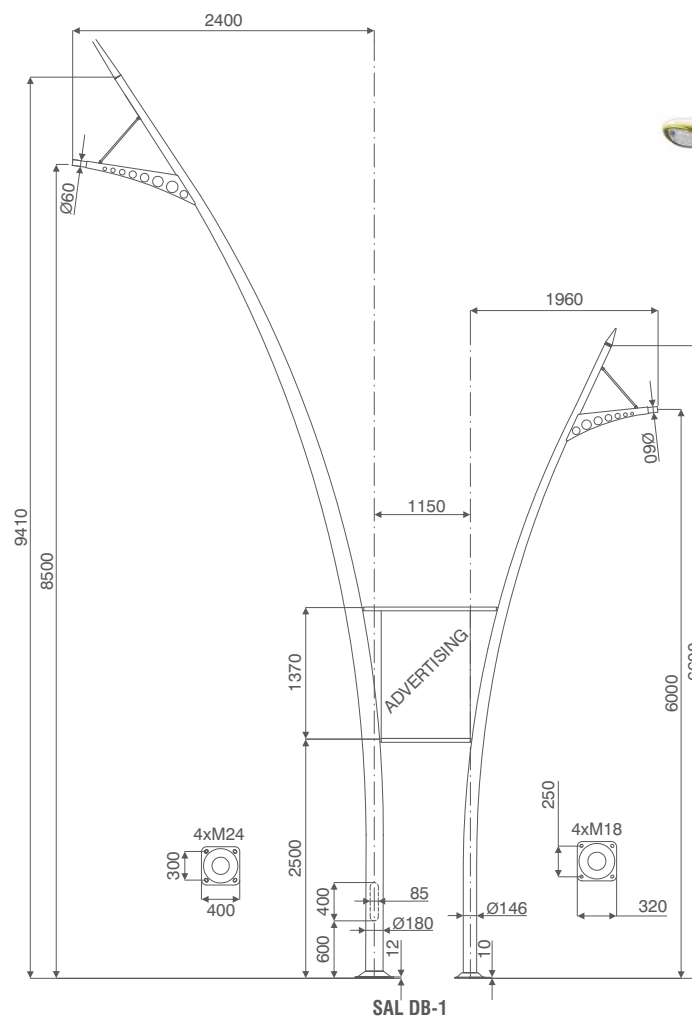
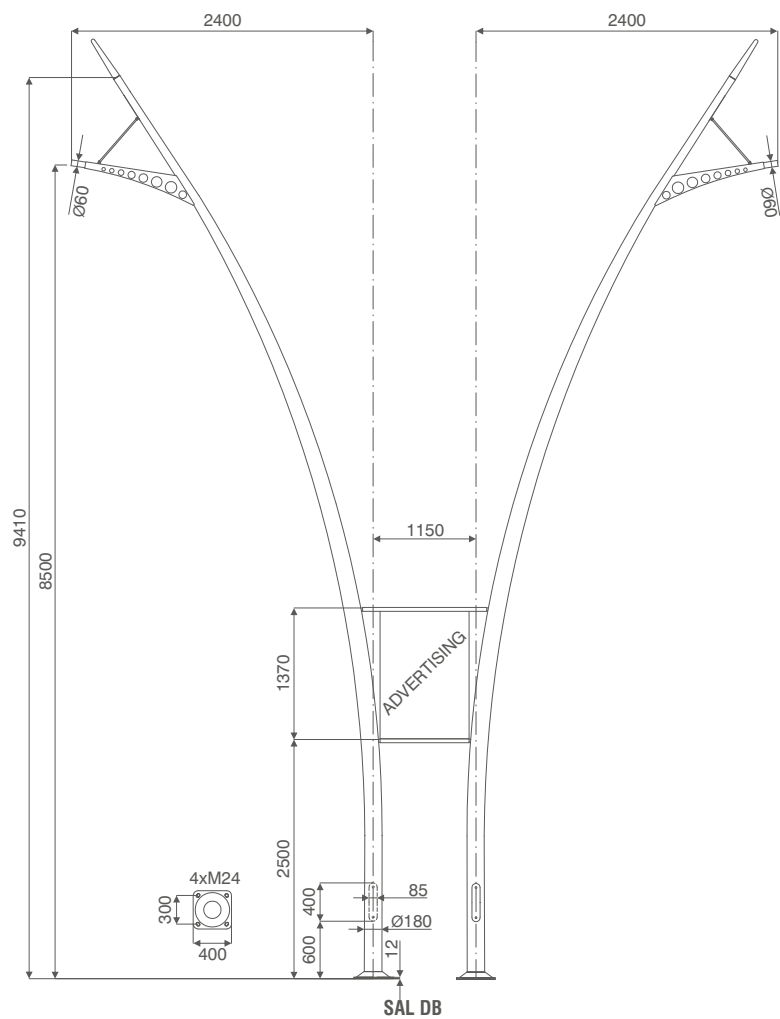


I. ALUMINIUM COLUMNS

Decorative columns DS and DB



Polish Recommend Product



I. ALUMINIUM COLUMNS

» Decorative columns DS and DB

